

54/74

74

BOCA ENTRADA

PLAT No. 2

IN SECTION 25 & 36, TOWNSHIP 47 SOUTH, RANGE 41 EAST,
PALM BEACH COUNTY, FLORIDA.

APRIL, 1986

SHEET 2 OF 2

COUNTY OF PALM BEACH
STATE OF FLORIDA

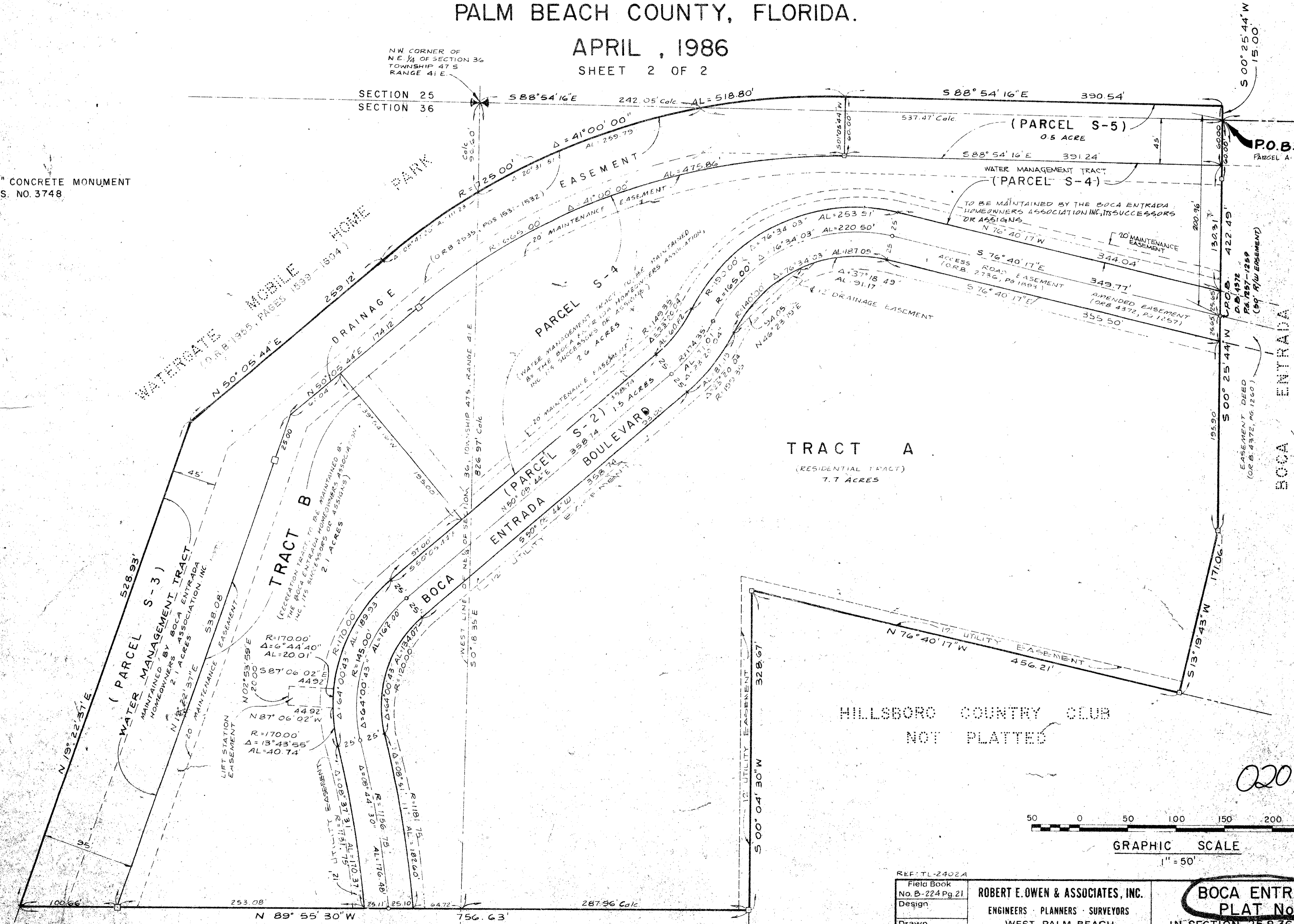
This Plat was filed for record at
this day of

19 and duly recorded in Plat Book No.
on page

JOHN B. DUNKLE, Clerk, Circuit Court

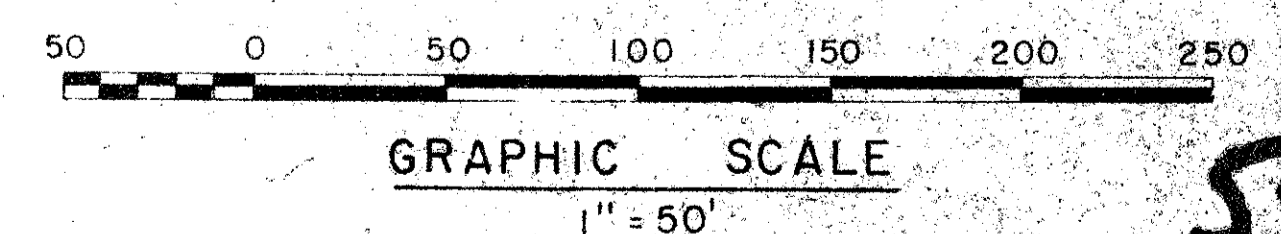
By D.C.

□ = FOUND 4"x4" CONCRETE MONUMENT
MARKED P.L.S. NO. 3748



BOCA ENTRADA
PLAT No. 1
PLAT BOOK 31, PAGES 95 & 96

0207-301



54/74

REF: TL-2402A	FILED BOOK No. B-224 Pg. 21	ROBERT E. OWEN & ASSOCIATES, INC. ENGINEERS · PLANNERS · SURVEYORS WEST PALM BEACH FLORIDA	BOCA ENTRADA PLAT No. 2 IN SECTION 25 & 36, TWP 47 SOUTH, RANGE 41 EAST, PALM BEACH CTY., FLA.	Job No. 83-196
Design	Scale AS SHOWN			
Drawn LC BISPOTT	Checked			Date SEPT 1983
				Sheet 2 of 2
				File No. BF-2214 B

DRAWING NUMBER

DRAWING NUMBER

DRAWING NUMBER

PLAN-HOLD CORPORATION · IRVINE, CALIFORNIA